

State of Wyoming Corner Record

(In compliance with the *CORNER PERPETUATION AND FILING ACT*, Wyoming Statutes, 1997, Section 33-29-140, et seq., and the Rules and Regulations of the Board of Registration for Professional Engineers and Professional Land Surveyors)

Reverse side of this form may be used if more space is needed.

Record of original survey and citation of source of historical information (if corner is lost or obliterated). Description of corner monumentation evidence found and/or monument and accessories established to perpetuate the location of this corner. Sketch of relative location of monument, accessories, and reference points with course and distance to adjacent corner(s) (if determined in this survey). Method and rationale for reestablishment of lost or obliterated corner.

ORIGINAL SURVEY: One-Quarter Corner on Township line common to Section 5, Township 13 North, Range 66 West, and Section 32, Township 14 North, Range 66 West of the 6th P.M. "Set a granite boulder, 16 x 7 x 6 for 1/4 section corner..." Per GLO – FIELD NOTES, TP. EXTERIOR, VOL.2 – 1870, page 32/23.

HISTORICAL INFORMATION: Cheyenne City Engineer – Field Book 364, page 68, and Book 415, page 42, both dated Sept. 4, 1941 reciting "... find old 1/4 stone... Stone marked 1/4 on N, 1 foot below surface. Place brass cap in conc. over stone." This corner position falls in the back yard of 1006 E. 9th Street, Cheyenne, WY; legal description being the E. 44' of Lot 6, Block 542, Original City of Cheyenne,

FOUND: 3/4" iron pipe with 1 1/4" brass water line cap set in concrete block approximately 3" below ground surface. Excavated along northerly side of found monument and found a red granite boulder underneath clearly inscribed 1/4. The found brass cap is typical of survey monumentation set by the Cheyenne City Engineers Office during this period of time.

SET: The 3/4" iron pipe was badly rusted and the brass cap broke off during examination. Re-set with epoxy inside remnants of found 3/4" iron pipe a 6" No.5 rebar, with a 2 1/2" dia. Aluminum Cap properly stamped and dated, to perpetuate corner position. Also set an 8" deep by 12" dia. cast iron street monument box around corner, with permission of the current land owner.

Also set two Reference Points, each being a 30" No. 5 rebar with a 1 1/2" dia. aluminum survey cap, stamped "COC" for City of Cheyenne, and PLS No. 4828, and "RP 1" or "RP 2" respectively. Both being approximately 2' southerly of the UPRR fence on the northerly side of the alley. Then tied to quarter corner as shown in following sketch.

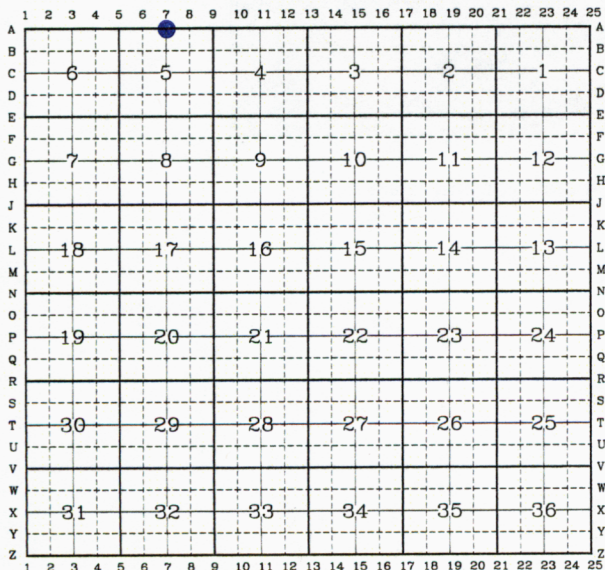
Cheyenne City Ground Datum Coordinates:

One-Quarter Corner:	N 69468.761,	E 601221.061
RP-1	N 69487.483,	E 601165.595
RP-2	N 69506.061,	E 601201.411

SEE REVERSE OF THIS PAGE FOR SKETCH AND PHOTOS

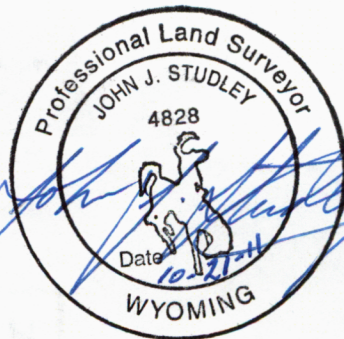
Date of Field Work: September 2011 Office Reference: _____

CROSS INDEX DIAGRAM



Land Surveyor / Firm / Address
John J. Studley, PLS No. 4828
City Surveyor, City of Cheyenne
2101 O'Neil Ave., Rm 207
Cheyenne, WY 82001
 Telephone: 307-637-6274

This corner record was prepared by me or under my direction and supervision.
 SEAL & SIGNATURE



Corner Name: North - One Quarter Corner Section: 5 T 13 N R 66 W ; 6th P.M. Cross-Index No.: A-7
 SBRPEPLS/PLSW: March 1994; PLSW January 1998

SKETCH AND PHOTOS

CORNER RECORDATION FORMS FOR

ONE-QUARTER CORNER COMMON TO SEC. 5, T13N, R66W, AND SEC. 32, T14N, R66W, 6TH PM, LARAMIE COUNTY, WYOMING.

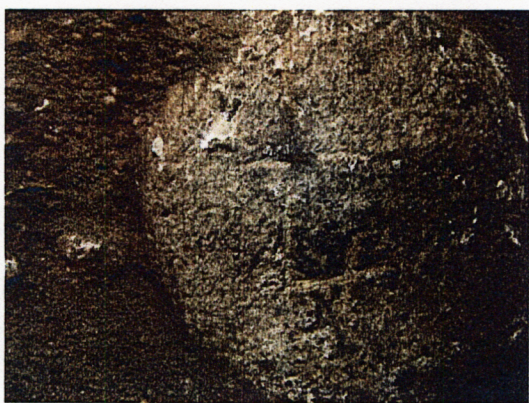
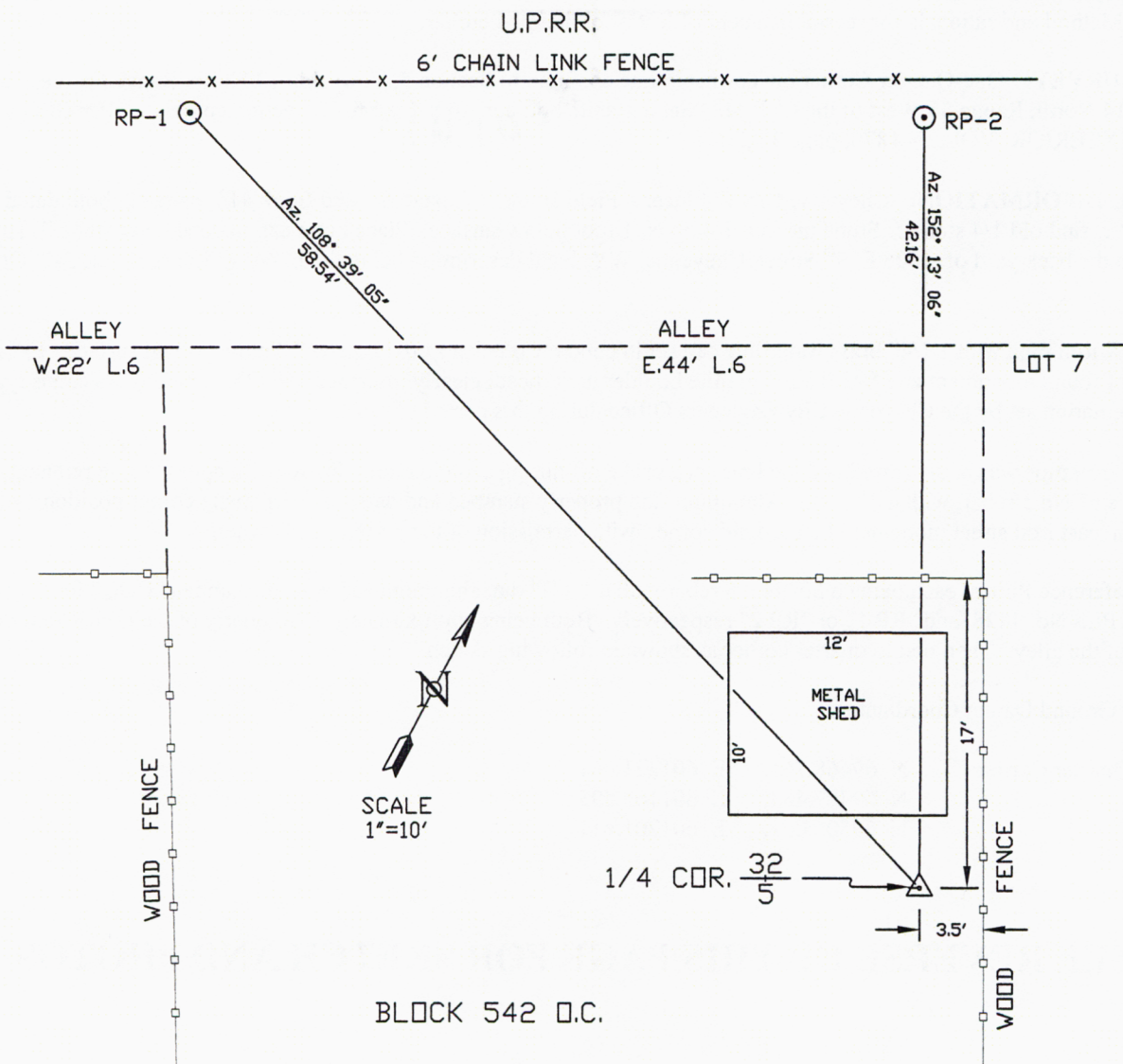


Figure 1 - found GLO stone with 1/4 inscription

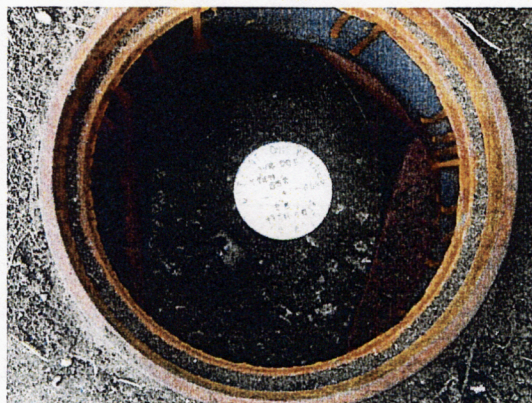


Figure 2 - broken brass cap and re-set AC



Figure 3 - cast iron monument box in back yard.